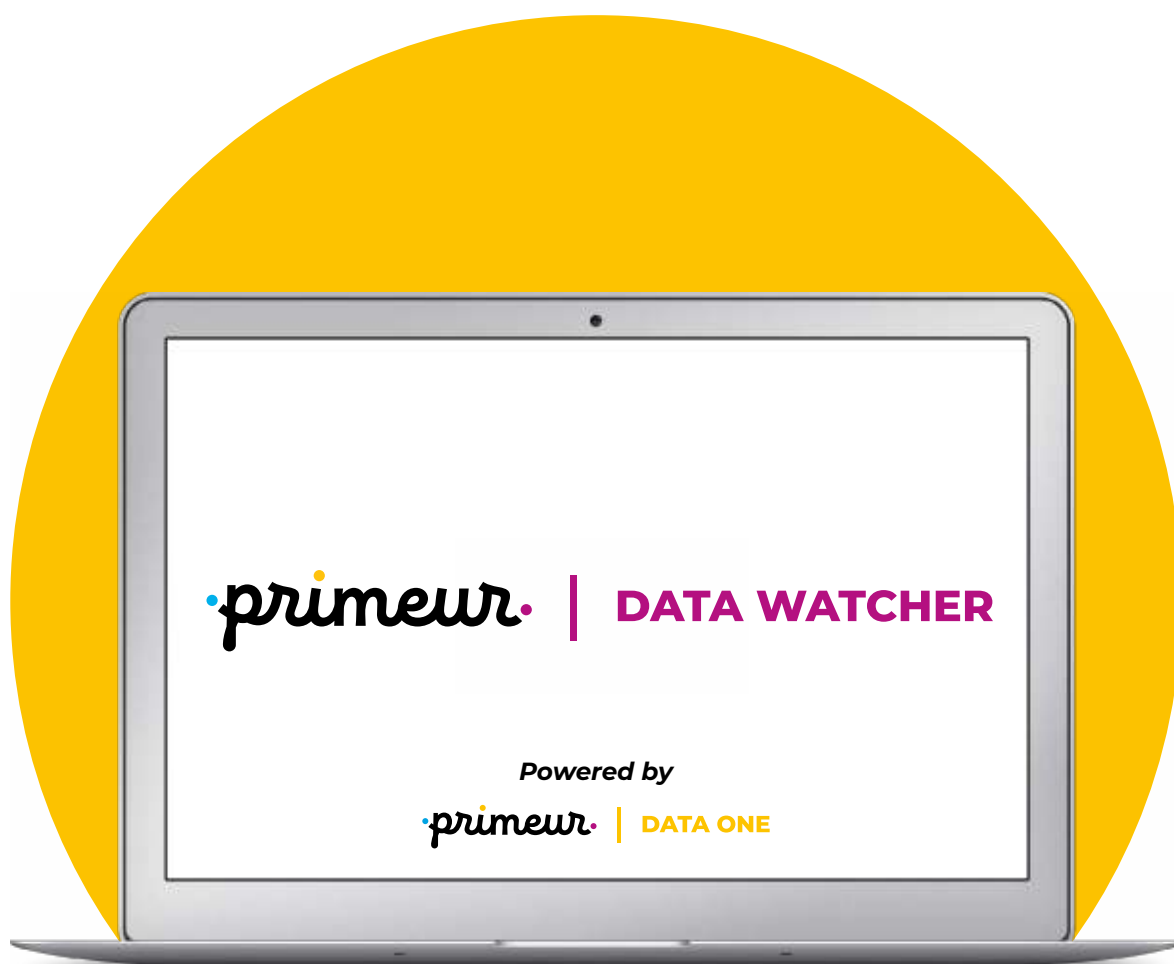




# PRIMEUR DATA WATCHER®

## DATASHEET



PRIMEUR DATA WATCHER® is Primeur end-to-end dataflow monitoring and control Enterprise solution. It provides visibility and full-control of dataflows, from the source to the destination, including transformation. With PRIMEUR DATA WATCHER® the entire E2E process is shown in real time thanks to its dynamic construction of dataflows and its intuitive visualization. Each dataflow is assigned to a Flow Model, enforcing compliance with company policies and business requirements while allowing early identification of issues to take appropriate actions. PRIMEUR DATA WATCHER® can give information on all dataflow processes within and outside the company, including third-party technologies.

### Governance challenges

Dataflow control has become a real need for all companies that use large amounts of data to organize, control and manage their operations. Over the years, organizations have been adopting vertical IT solutions and applications to manage their data and operativity, often deployed with different technologies and in different historical periods. This heterogeneity causes a proliferation of dataflows and a reduced and fragmented visibility on them.

In order to be able to control the business operating processes avoiding errors, delays and fines, it is therefore necessary to have a complete E2E view of the data, from its source to its final destination. This is the only way to achieve maximum efficiency, control and compliance with the dataflow Service Level Agreements.

### Product summary

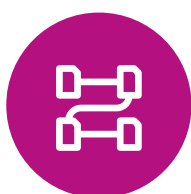
PRIMEUR DATA WATCHER® is a powerful dataflow governance tool that provides end-to-end visibility and control on integration dataflows, including any possible transformations, enrichment and routing across heterogeneous vendors or custom applications and technologies.

PRIMEUR DATA WATCHER® ensures thus that data is in the right place at the right time, allowing to configure Flow Models helping to better describe and control dataflows defining specific business metadata and SLA constraints. Therefore it allows to monitor any workflows to which data is subject,

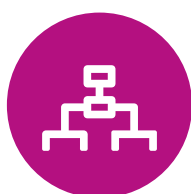
making it possible to know if and where problems have occurred. Indeed, PRIMEUR DATA WATCHER® tracks all the activities occurring to monitored data and offers a clear picture of what is happening, what has happened and what should happen. The result gives full control and visibility over all dataflows, detecting problems and anticipating operative issues and fallouts.

PRIMEUR DATA WATCHER® also allows to classify dataflows inside a searchable catalog that can be queried and browsed in an extremely intuitive way by both technical and business users.

### Key Features



**Dataflow  
Discovery**



**Dataflow  
Modeling**



**Dataflow  
Classification**



**Dataflow  
Inquiry**



**Dataflow  
Governance**

## Feature descriptions

### Dataflow Discovery

PRIMEUR DATA WATCHER® embeds a fast, intelligent and always-on process for continuous dataflow discovery and mapping. Dataflows are graphically represented with different perspectives, suitable both for Business and Technical users. With this multiple representation, any professional figure has a clear view of each process and of the impacts that may occur.

When monitoring Primeur Data Integration tools, DATA WATCHER® enhances all the potential of the COA® (Contract Oriented Architecture) displaying the dataflow as a sequence of related Contracts. In this way, DATA WATCHER® monitors the successful execution of each single step, allowing even to zoom on the processing inside each Contract to quickly isolate any possible malfunctions.



### Dataflow Modeling

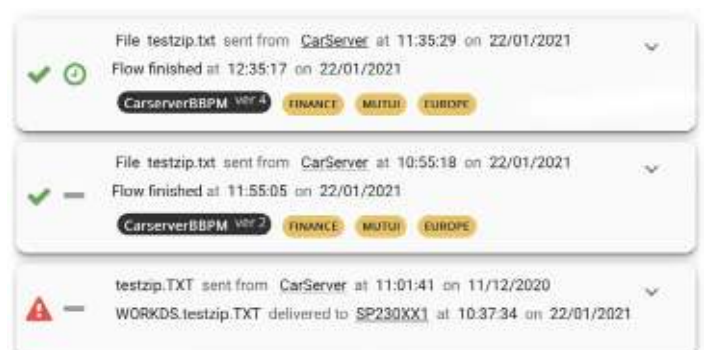
PRIMEUR DATA WATCHER® allows users to define and configure expected flows, by creating Flow Models that describe the acceptable behavior of the specific dataflow. The rules may also include business metadata or SLA compliance to better control business impacts and fallouts. Users thus define all policies and custom alerts on missed policies or SLAs, while DATA WATCHER® monitors dataflows to detect any deviations from the created Flow Model.



These deviations could possibly indicate malfunctions or security violations, requiring immediate attention from the respective owners. DATA WATCHER® alerts the respective owners of any difference from the specific Flow Model created, both in terms of time and process, allowing Business users to easily see the impact of their business flows, thanks to a clear and dynamic workflow representation.

### Dataflow Classification

PRIMEUR DATA WATCHER® allows also dataflow classification, creating custom dataflow attributes that can be defined on-the-fly and assigned to Flow Models in the form of business tags. They allow to classify dataflows in a searchable catalog that can be queried and browsed by both Technical and Business users, always allowing a complete view, from different perspectives, to maintain business operativity under control.





### Dataflow Inquiry

Dataflows can be searched in an intuitive way using any of their attributes. As users start typing search criteria, the auto-completion function guides them through the possible options of the searched text, facilitating their identification. Depending on their profile and specific needs, users can search dataflows based on:

- timing
- source
- destination
- node name
- transfer protocol
- business tag

without entering the full data.

### Dataflow Governance

PRIMEUR DATA WATCHER® applies an accurate control to ensure that dataflows are correctly executed and delivered on time. This means always knowing if applications are fed with accurate data, at the right time, allowing to take business decisions promptly and accordingly.

Additionally, DATA WATCHER® integrates with Operational Intelligence tools like Splunk, Elastic and Dynatrace, feeding them with dataflow information that they would have been otherwise lacking. Data Integration events are then correlated with system and application events providing incremental visibility and insight from one single console. As examples, a dataflow failure caused by a firewall issue or an application malfunction caused by a missed dataflow will be immediately highlighted allowing any prompt action to mitigate the issue.

## Key business benefits

- **Predictive Analysis** - Correlation capabilities and policy definitions allow PRIMEUR DATA WATCHER® to warn users in advance in case of an expected dataflow problem. This allows to take appropriate proactive actions and solve the issue before it becomes a business and operative problem.
- **Regulatory Compliance** - PRIMEUR DATA WATCHER® ensures that dataflows conveying critical data are carried out complying with company and legal regulations, allowing also to keep the history of end-to-end dataflows, thus permitting to always give evidence of what was transferred and when. PRIMEUR DATA WATCHER® uses Electronic Discovery Reference Model framework compliant services to track both what has happened and what has been defined in the Integration Layer at the configuration level.
- **Multi-SLA Management** - PRIMEUR DATA WATCHER® allows to define multi-SLA within a dataflow to monitor the on-time execution of every step. SLA rules can also monitor the number of occurrences of a single flow or the number of files sent within a specific timeframe.
- **Business Continuity** - With PRIMEUR DATA WATCHER®, troubleshooting is simplified and accelerated, allowing to work in a proactive way, anticipating operative issues and fallouts before they become critical.
- **Fast Time to value** - A quick deployment and an intuitive use make PRIMEUR DATA WATCHER® a fundamental tool for all organizations in need of total control of their dataflows from their production to their final storage (end-to-end).

## Platform overview

PRIMEUR DATA WATCHER® leverages a real-time data architecture incorporating the best of breed of open-source software for event management and processing in real time. It can be integrated with an external SMTP server for email-based notification routing and with an external Microsoft Active Directory or LDAP server for authentication and authorization purposes. It uses event-driven agents for collecting events from PRIMEUR DATA MOVER® and third-party applications.

DATA WATCHER® agents are lightweight and resilient to communication errors. They do not lose any events even in case of network instability or system outages. Collected events are checked, normalized and correlated. Event correlation is essential in order to offer a meaningful and operational view of integration dataflows. Dynamic dataflow construction enables the rendering of end-to-end dataflows on the Web User Interface as they are executed.

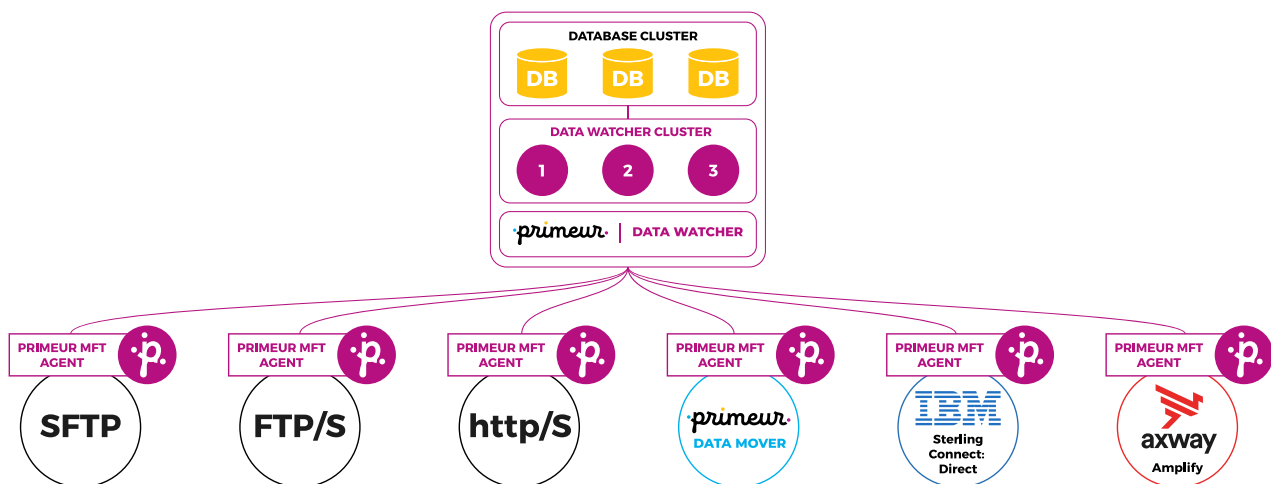
DATA WATCHER® allows to restrict visibility on dataflows to selected users and groups, so that each Business Unit can only see the flows under its responsibility.

### Supported integration technologies

- PRIMEUR DATA MOVER®
- PRIMEUR GHIBLI NEXT®
- Primeur Spazio®
- FTP/sFTP/FTPs
- IBM Connect:Direct
- Axway Amplify
- Other applications through custom integrations (average development time: four to six weeks)

### Deployment

PRIMEUR DATA WATCHER® can be deployed as a standalone component or as an embedded component in PRIMEUR DATA ONE®. It supports high-availability deployments and scales with additional nodes to support increasing workloads. It does not require additional licenses or components to operate.



For more information: [datawatcher@primeur.com](mailto:datawatcher@primeur.com)

### About Primeur

We are a Smart Data Integration Company, with an unconventional philosophy. For more than 30 years we have been serving some of the most important Fortune 500 companies with our unconventional approach, our problem-solving attitude and our software solutions.

Our goal is to help Companies to manage and control the data they generate, use and analyze without interfering with the existing IT systems and applications.

**We make Data Integration simple, accessible, secure and sustainable over time.**

We help Companies to work better and smoother, preserving their existing systems and IT investments. We Are Primeur.