

i-Vertix IT Management

IT Monitoring, Log & Data Management, Traffic Analysis and IT Asset Management for Enterprises and MSPs

DATA SHEET

- MSP ready
- Distributed Monitoring
- Plugin Store
- Smart Pollers
- Preconfigured templates ready to use
- Individual and interactive dashboards
- Autodiscovery for Network, VMware, Services and Devices
- Interactive Monitoring maps
- Synthetic User Monitoring
- Application Monitoring
- Performance Monitoring
- Alerting
- Event management
- 3rd party integrations
- SLA Reporting
- Network Configuration Backup
- Mobile App

i-Vertix IT Monitoring

Monitor anything, anytime, anywhere

i-Vertix IT Monitoring is an open, scalable and highly performing platform. Its goal is to provide Users with a tool that goes far beyond the traditional network performance monitoring.

It is efficient and simple to use and offers a 360° view on the entire IT environment, allowing to promptly detect anomalies and take corrective actions.

i-Vertix IT Monitoring natively supports over 600 devices, technologies and applications. Among others it can monitor:

- Servers
- Network infrastructure devices
- Applications
- Cloud systems
- Operating systems
- Virtual environments, such as VMware, KVM, Hyper-V and Docker Kubernetes
- Databases
- Synthetic User Monitoring

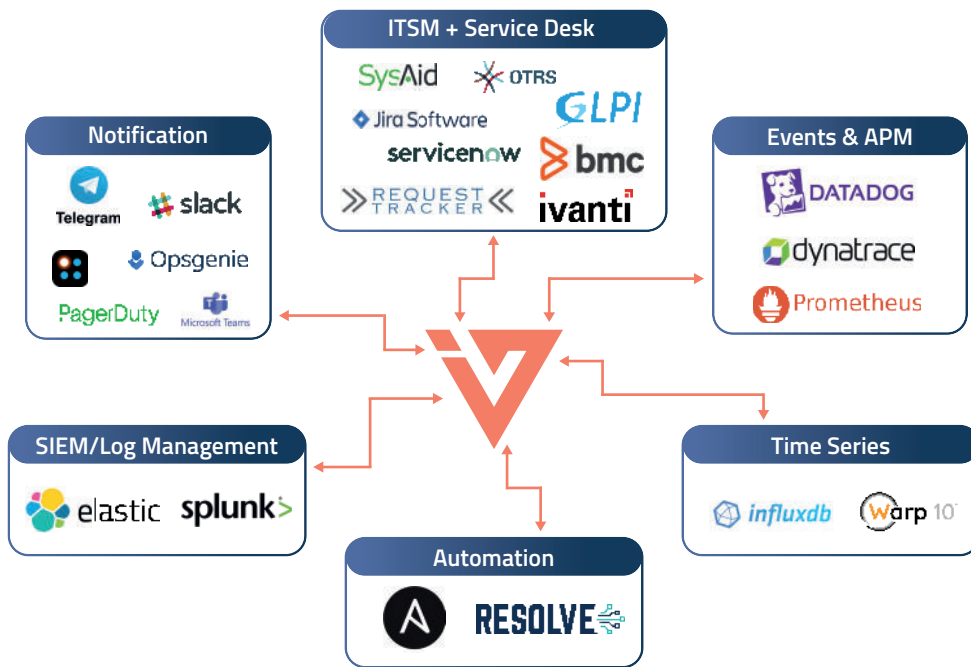


Are your applications working as they should?

Through Synthetic User Monitoring i-Vertix measures the performances of an application as they are perceived by an End User by simulating the activities performed by the user itself. Processes within the software are monitored to ensure that they are running smoothly. The feature is available for any type of application and supports the whole web, mobile and windows world.

Receive alerts even when there is no connection

Monitor isolated locations and distributed environments with i-Vertix Smart Pollers, available as both software and hardware appliance (equipped with a 4G module). These components are responsible for collecting monitoring data and sending them to the Central Manager, no matter where they are located. Even when isolated or disconnected from the Datacenter/NOC, Smart Pollers can still not only poll their networks but also send alarm notifications, thus guaranteeing continuous monitoring activities and managed services delivery.



3rd party integrations
 API integrations power up processes throughout many sectors and layers of an organization, to keep data in sync, enhance productivity and drive revenue. i-Vertex offers several 3rd party integrations that are ready to use and is always available to promptly develop new ones.

Network Discovery

- Automatic Network Discovery
- Layer 2/3 discovery and mapping
- Multivendor
- Automatic inventory and visualization of configuration parameters
- Automatic creation of dynamic network topology maps
- Automatic monitoring configuration

Monitoring Maps

- Visualization of the monitored devices into a graphical context
- "Maps in Maps" feature to link all the maps
- Built-in editor to customize the maps directly from the browser
- Graphical maps, geographical maps and automaps
- Integrated in i-Vertex IT Monitoring

Network Configuration Backup

- Automatic backup of network devices configuration files
- Web based
- Multivendor
- Saving in a GIT repository
- Version comparison
- Integrated in i-Vertex IT Monitoring

A Plugin Store where everything comes free of charge

The integrated Plugin Store is an archive of monitoring profiles that makes Plugins installation and updates extremely easy and fast. Templates and autodiscovery features are also included. Each Plugin comes with a description of the used communication protocols, a detail of what is being monitored and, eventually, information on the discovery modes that can automatically apply the plugin itself.

Get alerted only when needed

i-Vertex IT Monitoring comes with a complete event management feature, designed to address the most demanding production environments. The system is built to filter alerts and only show those that matter, display only relevant information, provide quick access to detailed information when needed and take action with one single click. Alerts can be sent from i-Vertex Smart Pollers through several communication channels, such as SMS, E-mail, Slack, MS Teams, Telegram, etc. Dedicated connectors integrate with ITSM solutions to easily open and manage tickets directly from the events console.

SLA Reporting

i-Vertex IT Monitoring automatically calculates SLAs for each host, service, host group or service group, taking several parameters into account, including scheduled downtimes. This allows to always view customers' services and infrastructure availability.



i-Vertix Log & Data Management

Real-time data analysis

i-Vertix Log & Data Management collects, archives, signs, parses, filters, classifies, enriches, encrypts and purges any kinds of logs coming from different sources and customers.

Logs are processed in real-time by a high-performance log management engine. The architecture is highly scalable, so the solution fits any environments, from small centralized deployments, to large distributed multitenant ones with huge amounts of data. The system comes with several preconfigured dashboards, but users are free to create new custom ones. All collected data can be enriched with additional information.

Windows compliance

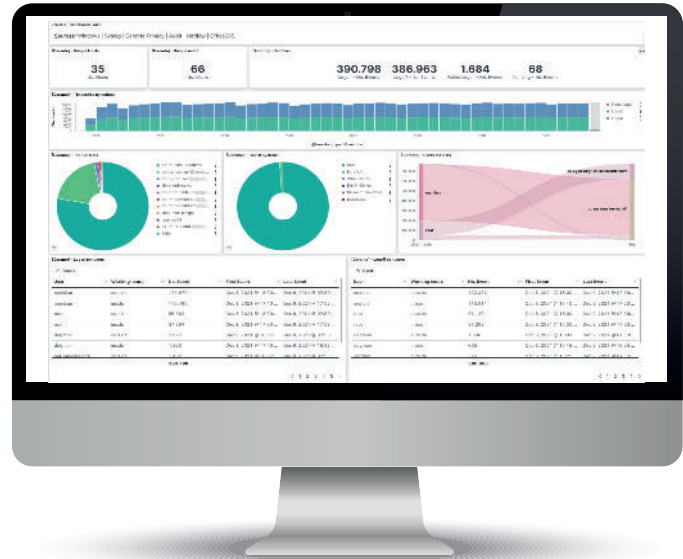
i-Vertix helps meet Data Protection and Data Privacy regulations compliance requirements. This is done by providing automation, advanced security controls, log analysis, log classification and incident response. The default i-Vertix ruleset provides support for GDPR, PCI DSS, HIPAA, NIST 800-53 and TSC frameworks and standards. i-Vertix rules are used to detect attacks, system errors, security misconfigurations and policy violations.

Authentication analysis

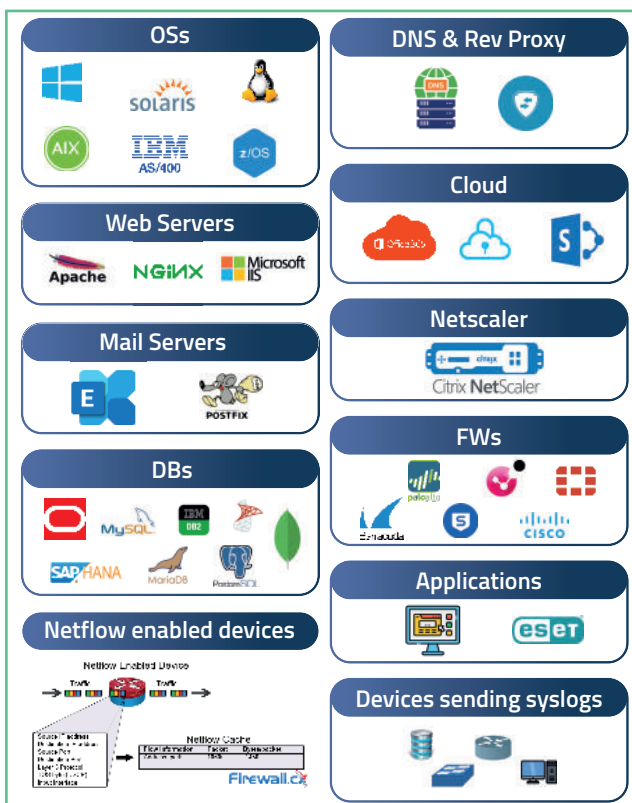
Authentication data provide visibility on users that access (or try to access) systems. i-Vertix Log & Data Management collects all the authentication events (successful or failed logins and logoffs) across different device types and platforms (Windows, Office365, Linux SSH, IBM iSeries, Network devices, storages, etc.) and normalizes them, providing a consolidated, consistent overview of authentications that take place throughout the whole IT environment.

Network traffic analysis

Using i-Vertix it is also possible to visualize and analyze network traffic. In fact, i-Vertix Log Collector can collect, aggregate and analyze traffic flow records (NetFlow, sFlow, IPFIX, ...). In addition to real-time traffic analysis it can also perform malicious sources detection and alert on network traffic related events, in combination with the i-Vertix IT Monitoring module.



Optimized Log collection strategy



While i-Vertix Log & Data Management meets the requirements of most customers, it can also be extremely useful in complex IT environments where a SIEM is used. Large customers can use their SIEM to manage only critical logs/events and use i-Vertix Log & Data Management to:

- perform effective data aggregation, parsing and normalization across all different data sources
- discard background noise/lower value events
- optimize log retention, reducing storage requirements and maintenance costs
- classify/enrich your data according to policies and Data protection regulations
- send only critical, filtered and normalized data to your SIEM



i-Vertex IT Asset Management

Gather information on all your IT assets

The dashboard is interactive and customizable and provides an overview of all the assets that are being tracked down. The agent is available for Windows, Mac and Linux and has different functions, while the GUI is compatible with the most common browsers.



- **Manage resources from a single console**
Eliminates manual work in provisioning, monitoring and resource management, increasing operational efficiency
- **Inventory management**
Manage assets from purchase to retirement together with their licenses and contracts
- **Software distribution**
Easy software deployment on multiple operating systems

i-Vertex IT Asset Management provides a detailed inventory of both hardware and software assets, using a single central console and agents that collect data. The agent performs a detailed inventory assessment and sends to the Central Manager information regarding hardware (modules, components, cards, batteries/power supplies, volumes, etc.), operating system and software, including also information on all the equipment connected to the asset, like external monitors, local printers, USB-connected dongles, headsets, etc.

Inventory of off-site devices, such as those used for Smart Working, is also possible, as long as they connect to the network. Moreover, a network scan job can be performed, to provide an automatic inventory of network devices (switches, network printers and other devices that do not support an agent).

Other key features

- Software licenses, contracts and budget management
- IT Asset lifecycle management
- Servicedesk ITIL (Ticketing, Incident, Change and Project Management)
- Reporting and statistics
- Alarm management
- Multi tenant and multi language



ABOUT i-VERTEX

i-Vertex is an ambitious and innovative company specialized in IT Management solutions for Enterprises and MSPs. Over 20 years of experience in the field allow us to listen and understand our Partners' and Customers' necessities and provide them with exactly what they need. i-Vertex is your trusted Partner, who stands for simplicity, transparency and reliability.

PGUM Ltd

Vecchia Street 18/C -
39040 Ora (BZ) - Italy
www.i-vertex.com/en/
sales@i-vertex.com



For the BENELUX:

SCOS Automation BV
Polarisavenue 53
2132 JH - HOOFFDORP
www.scos.nl | info@scos.nl

